

Voluntary Energy Efficient Vehicle (EEV) Labelling Scheme

2023



The objectives of the Voluntary EEV Labelling Scheme introduction are:

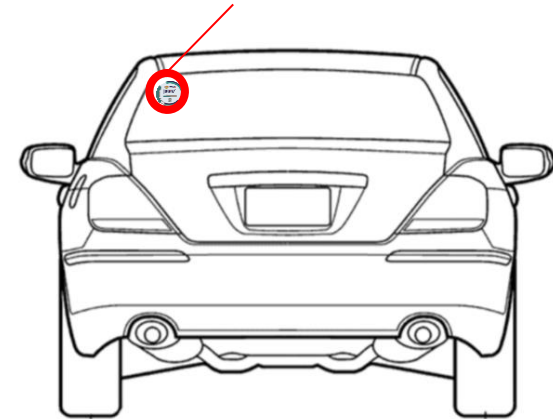
- i. to raise **public awareness** on fuel efficiency of vehicles as to accelerate the uptake of low-emission vehicles and create a sustainable society;
- ii. to **increase the market competitiveness** amongst industry players while conforming to the Environmental Regulations; and
- iii. to **align with Malaysia's commitment** in reducing the carbon emission intensity by 45% by 2030, as outlined by the UNFCCC under the Paris Agreement.



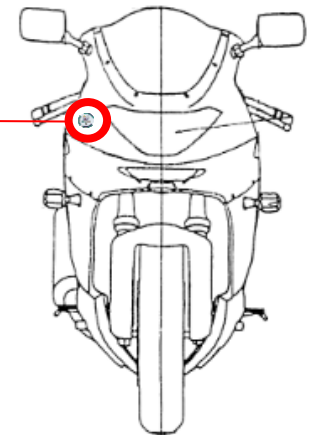
EEV Label Placement for Car (inside or outside of vehicle at the rear windscreen)



EEV Label



EEV Label Placement for Motorcycle (upon design by manufacturer)





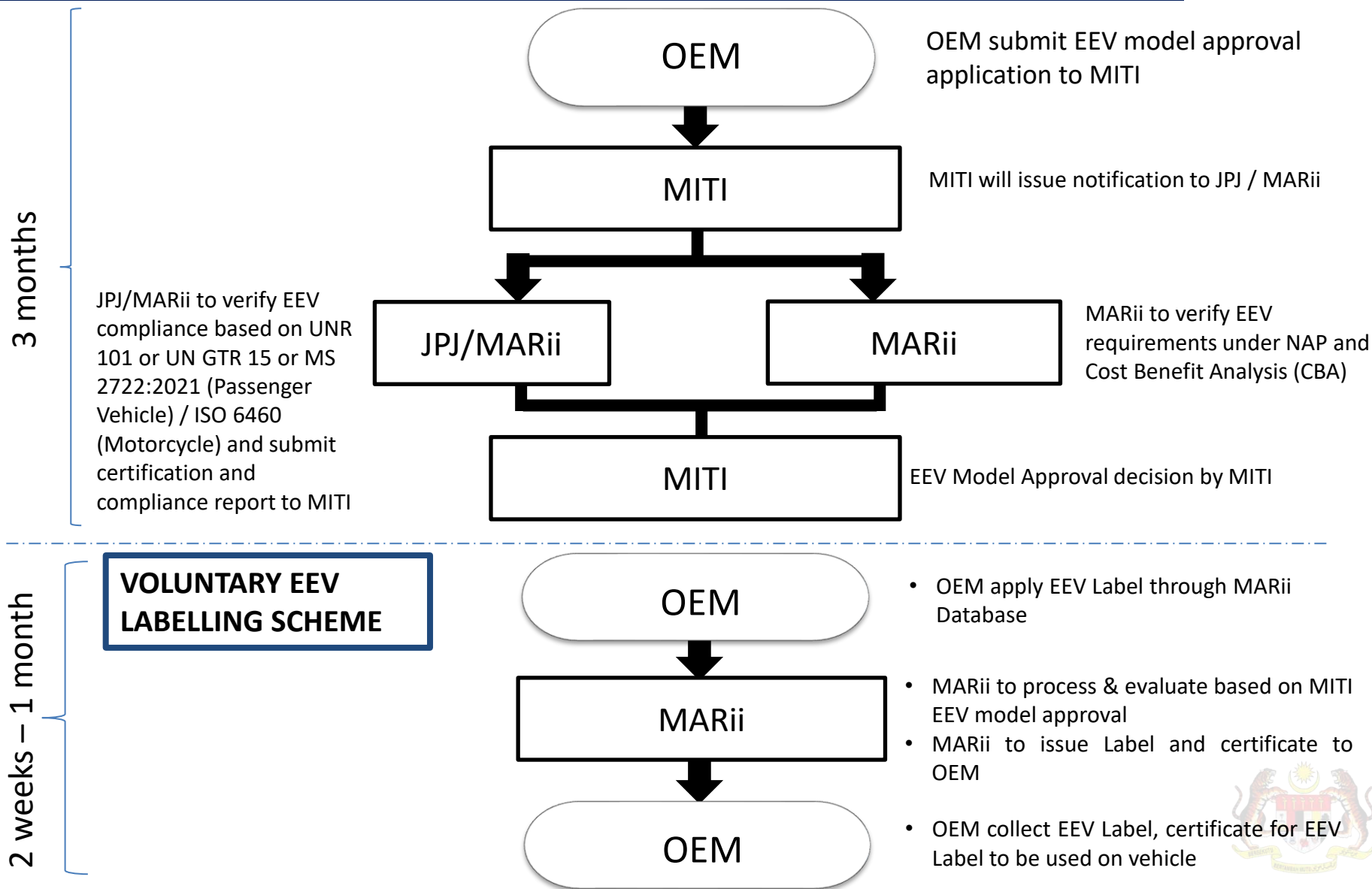
Certificate



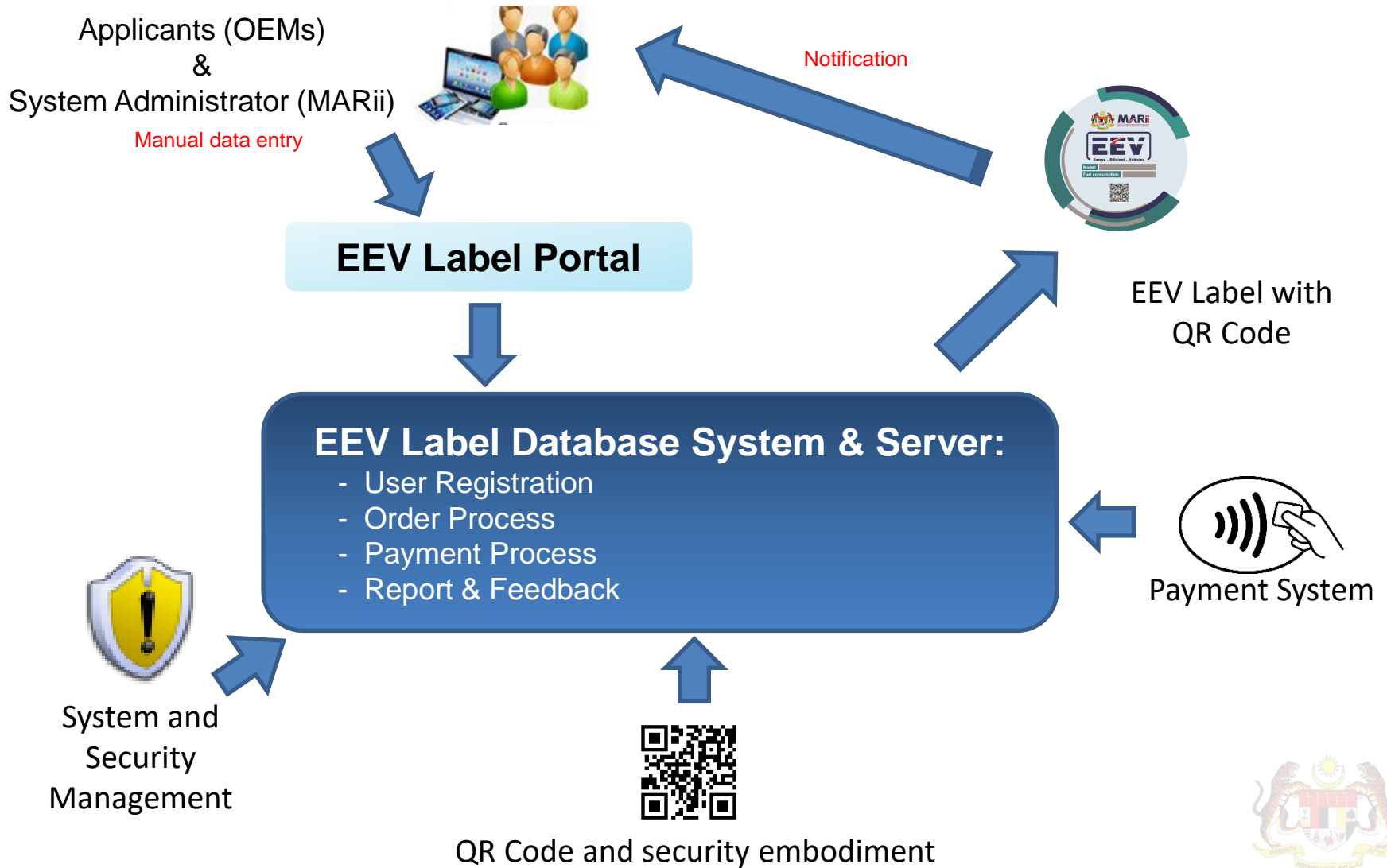
Trophy/Plaque



EEV MODEL APPROVAL PROCESS & EEV LABEL APPLICATION



EEV APPLICATION PROCESS



ENERGY EFFICIENT VEHICLE (EEV) LABEL APPLICATION

SIGN IN

Username

Please enter Username

Password

Please enter Password

[Forgot Username / Password](#)

LOGIN

TODAY FRIDAY, 26 APR 2019 10:59:29

Introduction for EEV Label Application

The Energy Efficient Vehicle (EEV) Labelling Scheme by MARii is one of the initiatives to encourage EEV Penetration in Malaysia that aligns with NAP2014. This webpage provides online system for the EEV Label application by OEMs to recognise their EEV models. Figure below shows the EEV Label application approval process:

EEV MODEL APPROVAL PROCESS & EEV LABEL APPLICATION

OEM

OEM submit EEV model approval application to MITI

MITI

MITI will issue notification to JPS / MARii

➤ Visit EEV Label Application website at www.eev.marii.my





NUR FARHANA HELME, TSV

[Logout](#)

Today Thursday, 9 Nov 2017 18:13:05

ENERGY EFFICIENT VEHICLE (EEV) LABEL APPLICATION

[EEV Application List](#) [New EEV Application](#) [Company Profile](#) [Change Password](#)

APPLICATION STATUS : [DRAFT](#)

APPLICANT INFORMATION

Company Name	: TSV	SSM No.	: 123123
Address	: AOISDAOISND	Contact Person Name	: HANA
		Tel No.	: 0320123190
		Mobile No.	: 0133019238
Postcode	: 54209	Email Address	: hana@marii.my
State	: PERAK		

(EEV) LABEL APPLICATION INFORMATION

Model Details

Power Train

Vehicle Weight & Performance

MODEL DETAILS

Application No.

[DRAFT_1117004](#)

Maker / Manufacturer*

Date Generated

[01/Nov/2017](#)

Country of Origin*



(EEV) LABEL APPLICATION INFORMATION

Model Details

Power Train

Vehicle Weight & Performance

Vehicle Fuel Consumption

Wheels

Safety Features

Vehicle Photo

Supporting Document

Sticker Summary

Shipping Information

Quotation / Payment Information

POWER TRAIN

☒ Full Hybrid ☐ Mild Hybrid

Powertrain configuration (if applicable)Series, Parallel or combination

XXXX

1 - ICE powertrain

PowerTrain Manufacturer *

XXXX

Engine Type *

☒ Positive-Ignition ☐ Compression-Ignition

Capacity in Cubic Per Centimetre (cc) *

1234.00

Idle Speed *

123.00

Maximum Net Power in kW (hp) at min-1 *

123

Volumetric Compression Ratio : 1 *

5.00

Manufacturer's Engine Code *

XXX

No. Cylinder / Valves *

3

Stroke / Bore in milimetre (mm) *

5

Carbon Monoxide Content by Volume in Exhaust Gas with the Engine Idling (%) *

12.00

Maximum Torque in Nm at min-1 *

123.00

Distance / Range (KM/Litre) *

123



Model Details

Power Train

Vehicle Weight &
Performance

Vehicle Fuel
Consumption

Wheels

Safety Features

Vehicle Photo

Supporting Document

Sticker Summary

Shipping Information

Quotation / Payment
Information

Agreement &
Declaration

STICKER SUMMARY



Model Reference Number : [EEV_1117004](#)

* The below information will be printed on the EEV Label


Model : 

Sample only

[VIEW SAMPLE](#)

[NEXT](#)






MODEL INFORMATION

Maker / Manufacturer:
Country of Origin: MALAYSIA
Model of Application:
Type of Bodywork: SALOON
No of Seats: 4
Base Price (RM): 54,678.00
Parts Content from Malaysia (%): 55.00
Tank Capacity (litre): 23.00
Vehicle Curb Weight (kg): 2,342.00
Top Speed (km/h): 234.00
Type of Transmission: AUTOMATIC
Drive Wheels: REAR
Tyre Pressure (kPa): 342.00
Manufacturer's Engine Code: DSFS
Capacity in Cubic Per Centimetre (ccm): 1,000.00
Distance / Range (km/litre): 423.00
Distance / Range (km/charge): 1,234.00

FUEL ECONOMY

Type of Fuel: CNG
Fuel Consumption for Combined (l/100km): 5.40
Electric Energy Consumption Combined (Wh/km): 5.40
Rest period recommended between the end of discharge and start of discharge (mins):

GREENHOUSE GAS EMISSIONS

CO2 Emission for Combined (g/km): 3,453.00

SAFETY FEATURES

Active Safety: 1 FORWARD COLLISION WARNING SYSTEMS
2 ANTI-LOCK BRAKING SYSTEMS
3 ELECTRONIC STABILITY CONTROL

Passive Safety: 1 SFSDBS
2 SEATBELTS
3 AIR BAGS

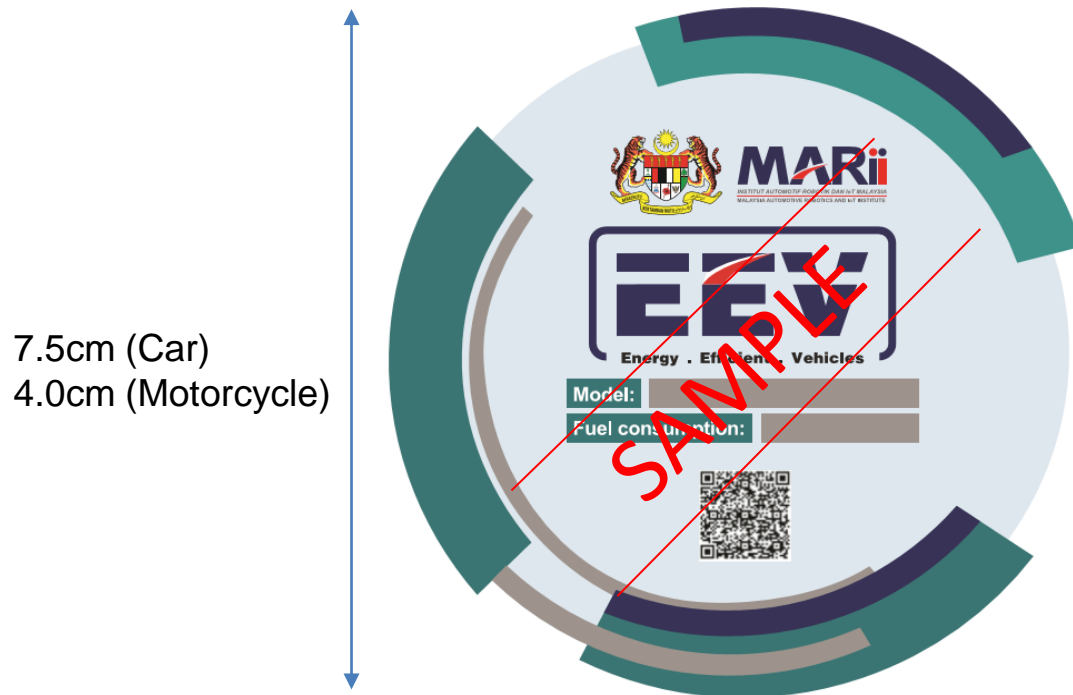
Sample only



Item	Price (RM)
EEV Label with QR code (per unit)	5.00
EEV Label Certificate and Plaque (per variant)	500.00
Delivery Cost	rate as per weight
Processing Fee (per variant)	100.00

- The cost for EEV Label may be declared as investment under CBA Application.





- Diameter: 7.5cm (Car) / 4.0cm (Motorcycle)
- Resistant to weather and colour fading.
- EEV Label to be pasted inside / outside of the vehicle (1 year warranty).
- Vehicle model name, fuel consumption and QR code are variable according to customer's order.





**MINISTRY OF
INVESTMENT, TRADE AND INDUSTRY**



Thank You